

# 3M™ Flexographic Mounting Systems

## Key Customer Markets

- ◆ Flexible Packaging
- ◆ Corrugated
- ◆ Tag and Label
- ◆ Multi-Wall Bags
- ◆ Folding Cartons
- ◆ Envelopes

3M manufactures the most complete line of mounting tapes for optimizing print quality. From two-sided adhesive vinyls to low, medium and high-density foams, these tapes are designed to provide the optimum print performance to accomplish virtually any flexographic printing job. 3M provides local technical support through flexographic specialists, and sells its product through leading flexographic distributors. Today and tomorrow, 3M is committed to providing the flexographic printing industry with responsive, dependable performance of flexo mounting system alternatives to help assure the best print job possible.

### Flexomount

#### **Solid Printing Tape**

Designed for solid and line work based on state-of-the-art caliper control and innovative adhesive systems.

### Cushion Mount™

#### **Solid Printing Tape**

High density foam tapes for solid ink coverage with the added benefit of cushioning to reduce cylinder bounce.

### Cushion Mount™ Plus

#### **Combination Printing Tape**

Medium density foam for excellent versatility to provide consistent, solid ink coverage while effectively controlling dot gain.

#### **Process Printing Tape**

Low density tape designed for high quality process printing.

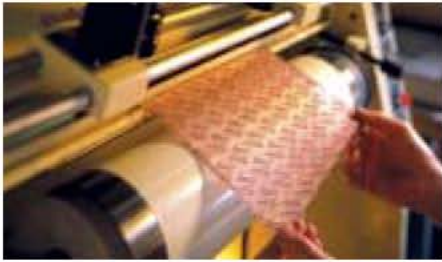
### Cylinder Mount Build-Up Tapes

Designed for building up print cylinder diameters to help meet press undercut and pitch diameter requirements.

## PRODUCT INFORMATION

Product	Caliper in. (mm)	Carrier	Print
<b>FLEXOMOUNT SOLID PRINTING TAPE</b>			
411DL	.015 (0.38)	Gray Solid Vinyl	Solid/Line
412DL	.020 (0.50)	Gray Solid Vinyl	Solid/Line
413DL	.015 (0.38)	Black Solid Vinyl	Solid/Line
414DL	.020 (0.50)	Black Solid Vinyl	Solid/Line
447DL	.010 (0.25)	Gray Solid Vinyl	Solid/Line
<b>CUSHION MOUNT™ SOLID PRINTING TAPE</b>			
929	.060 (1.52)	Tan High Density Elastomeric Foam	Solid/Line
933	.015 (0.38)	Tan High Density Elastomeric Foam	Solid/Line
939	.020 (0.50)	Tan High Density Elastomeric Foam	Solid/Line
949	.020 (0.50)	Tan High Density Elastomeric Foam	Solid/Line
<b>CUSHION MOUNT™ PLUS COMBINATION PRINTING TAPE</b>			
1015	.015 (0.38)	White Standard Polyethylene Foam	Combination
1015M	.015 (0.38)	White Standard Polyethylene Foam	Combination
1020	.020 (0.50)	White Standard Polyethylene Foam	Combination
1020M	.020 (0.50)	White Standard Polyethylene Foam	Combination
1020R	.020 (0.50)	White Standard Polyethylene Foam	Combination
1040	.040 (1.02)	White Standard Polyethylene Foam	Combination
1060	.060 (1.52)	White Standard Polyethylene Foam	Combination
1720M	.020 (0.50)	Green Medium Firm Polyethylene Foam	Combination
1815M	.015 (0.38)	Blue Firm Polyethylene Foam	Combination
1820M	.020 (0.50)	Blue Firm Polyethylene Foam	Combination
1915M	.015 (0.38)	Pink Soft Polyethylene Foam	Combination
1920M	.020 (0.50)	Pink Soft Polyethylene Foam	Combination
E1020	.020 (0.50)	White Standard Polyethylene Foam	Combination
<b>CUSHION MOUNT™ PLUS PROCESS PRINTING TAPE</b>			
1115	.015 (0.38)	Cream Low Density Polyethylene Foam	Process
1120	.020 (0.50)	Cream Low Density Polyethylene Foam	Process
<b>CYLINDER MOUNT BUILD-UP TAPE</b>			
1620	.020 (0.50)	Clear Vinyl	All Types of Printing
1640	.040 (1.02)	Clear Vinyl	All Types of Printing
1650	.050 (1.27)	Bronze Vinyl	All Types of Printing
<b>CORRUGATED MOUNTING TAPE</b>			
2205	.050 (1.27)	Transparent Film	All Types of Printing

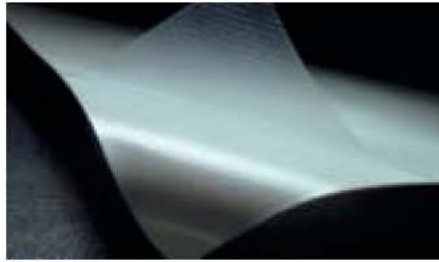
Note: This technical information and data should be considered representative or typical only and should not be used for specification purposes.



**Plate Mounting**

**Fig.138**

3M™ Mounting Tapes are designed to hold printing plates securely during the printing process yet remove cleanly at the end of a press run.



**3M™ Flexographic Mounting Tapes E-Series**

**Fig.139**

Crosshatched pattern in the adhesive allows air to flow out from under both plate and tape.



**3M™ Thin Flexographic Mounting Tape 2205**

**Fig.140**

New, with adhesives designed specifically for the corrugated flexographic printing process. Features air release technology.



**Cylinder Mount Build-Up Tapes**

**Fig.141**

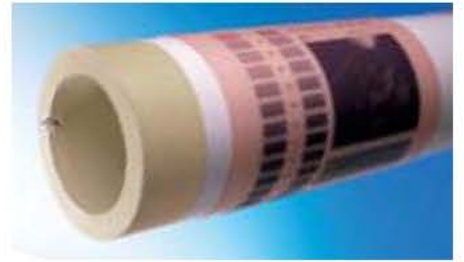
Used to increase cylinder diameter. An economical way to capitalize on the print quality advantages of thinner printing plates and tapes.



**3M™ Combination Printing Tape 1720M**

**Fig.142**

This medium-firm foam tape is slightly more resilient than our 1820M. It provides good solid ink density while holding clean fine type reverses.



**3M™ Soft Combination Printing Tape 1920S**

**Fig.143**

Our softest combination printing tape with adhesives intended for use on sleeves.

	Solid Printing			Combination Printing				Process Printing
10% Highlight								
40% Midtone								
Reverse								
Positive								
	411DL 412DL 413DL 414DL 447DL	929 933 939 949	1815M 1820M	1720M	E1020 1015/1015M 1020/1020M 1020R 1040 1060	1915M 1920M 1920S	1115 1120	

Magnification: 40x on Dots, 20x on Positive & Reverse Type

Ink: Process Magenta

Substrate: 2 mil polyethylene film

Impression: 1 mil

Line speed: 800 fpm

Anilox: 800 line 2.4 bcm